

Available separately, Andis ULTRAEDGE™ blades will fit on the Andis model AG, AG2, AGC, AGC2, AGR, MBG Clippers and Oster® A5 Clippers.

ALL BREEDS & MIXED BREEDS

ANDIS AG BLADE

Sanitary prep	10
Pads	15 or 5/8" wide
Slightly matted	5 & 5FC
Very matted	7 & 7FC
Very heavy coats	7 or T84
Legs	3 3/4 FC, 5/8" HT, SC or Scissor
Feet (except poodle), beards, mustaches, furnishings	Scissor

AIREDALE TERRIER

Body, sides & tail	7 or 5
Head, throat	9 or 7
Ears	10 or 15

BEARDED COLLIE

Body	3 3/4 & 3 3/4 FC, 5/8" HT or 1 1/4" SC
------------	--

BEDLINGTON TERRIER

Body	5 & 5FC to 3 3/4 & 3 3/4 FC
Face, ears, 2/3 of tail end	10 or 15

BICHON FRISE

Plush look - Body	3 3/4 & 3 3/4 FC or 5/8" HT
Short - Body	4 & 4FC or 5 & 5FC

BOUVIER DES FLANDRES

Body, sides	3 3/4 or 5/8" HT
Legs, underbody, face	Scissor or 1 1/2" SC
Cheeks & throat	4
Ears	10 or 15

BRIARD

Body	5/8" HT
Legs, underbody, face	Scissor or 1 1/2" SC

CAIRN TERRIER

Head, face, legs, underbody	Scissor
Body	4 or 3 3/4
Ears	10 or 15

CATS

Very matted	10
Some matting	7FC
No matting	7FC to 5/8" HT

COCKER SPANIEL

Body, side, back, tail	7 & 7FC or 5 & 5FC
Face, ears, throat, head	10 or 15

DANDIE DINMONT TERRIER

Body, side, back	4
Head, tail, feet	Scissor
Top of Ears	15 or 10

ENGLISH COCKER SPANIEL

Body, side, back	7 & 7FC or 5 & 5FC
Front of forelegs	7 & 7FC
Head, neck, ears, face	15

ENGLISH SETTER

Body, side, back	7 & 7FC or 5 & 5FC
Head	9
Top of ears	10 or 15
Underbody, tail, legs	Scissor

ENGLISH SPRINGER SPANIEL

Body, sides, back, tail	7 & 7FC or 5 & 5FC
Head, neck, ear top, throat	10

FOX TERRIER & IRISH TERRIER

Body, sides, back, tail	5
Head, ears, throat	10

GORDON SETTER & IRISH SETTER

Body, side, back	7 & 7FC or 5 & 5FC
Head, ears, throat	10
Underbody, tail, legs	Scissor

"SC" Snap-on comb can be used over 30, 35 or 40 blades

"10" (ex. 10 or 15) - Select the blade according to how long you want to leave the coat

"7 &" (ex. 7 & 7FC) - Use the "skip to cut" (i.e. 7) blade before bathing and the "finish cut" (i.e. 7FC) blade after bathing to complete the cut

"to" (7 & 7FC to 5/8" HT) - Select the blade according to the size of the animal and the length you want to leave

Blade cutting lengths listed are against natural lie of the coat. Cutting with lie of the coat leaves hair one size longer (ex. #7 cut with lie of the coat = length of #5). All suggested body blades should be used with the lie of the coat.



Item #64160
Trimmer
Leaves hair 1/1500" - 0.1mm
Surgical Stainless-Steel



Item #64185
Size 00000
Leaves hair 1/125" - 0.2mm



Item #64076
Size 40
Leaves hair 1/100" - 0.25mm
Item #64084
Size 40 Surgical Stainless-Steel
Leaves hair 1/100" - 0.25mm



Item #64935
Size 35
Leaves hair 1/75" - 0.35mm



Item #64075
Size 30
Leaves hair 1/50" - 0.5mm



Item #64072
Size 15
Leaves hair 3/64" - 1.2mm



Item #64071
Size 10
Leaves hair 1/16" - 1.5mm



Item #64120
Size 9
Leaves hair 5/64" - 2mm



Item #64170
Size 8 1/2
Leaves hair 7/64" - 2.8mm



Item #64080
Size 7 Skip-Tooth
Leaves hair 1/8" - 3.2mm



Item #64121
Size 7 Finish Cut
Leaves hair 1/8" - 3.2mm



Item #64079
Size 5 Skip-tooth
Leaves hair 1/4" - 6.3mm



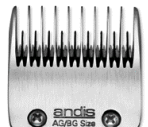
Item #64122
Size 5 Finish Cut
Leaves hair 1/4" - 6.3mm



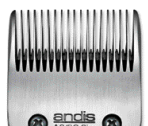
Item #64090
Size 4 Skip-Tooth
Leaves hair 3/8" - 9.5mm



Item #64123
Size 4 Finish Cut
Leaves hair 3/8" - 9.5mm



Item #64133
Size 3 3/4 Skip-tooth
Leaves 1/2" - 13mm



Item #64135
Size 3 3/4 Finish Cut
Leaves hair 1/2" - 13mm



Item #64930
Size 5/8" HT
Leaves hair 5/8" - 16mm



Item #64960
Size 5/8" Wide-Toe Blade
Leaves hair 1/32" - 0.8mm



Item #21641
Size T84
Leaves hair 3/32" - 2.4mm

DO NOT use skip tooth blades on cats. Keep skin taut when clipping dogs and cats.

Available separately, Andis ULTRAEDGE™ blades will fit on the Andis model AG, AG2, AGC, AGC2, AGR, MBG Clippers and Oster® A5 Clippers.

KERRY BLUE TERRIER

ANDIS AG BLADE

Body, sides, back, tail 4 & 4FC to 5/8" HT
 Cheeks & throat 10 or 15
 Top of head 4 or 5

LAKELAND TERRIER

Body, sides, back, tail 4 or 5
 Head 8 1/2
 Throat, ears 10

LHASA APSO & MALTESE

Body 5 & 5FC to 5/8" HT
 Head, face, tail, underbody Scissor

OLD ENGLISH SHEEPDOG

Body 4 & 4FC to 5/8" HT
 Head, face Scissor

PEKINGESE

Body 5 & 5FC to 5/8" HT

POODLE

Face, feet, base of tail 10 or 15
 Body 7 & 7FC to 5/8" HT
 Top knot, tail piece Scissor
 Pattern set 5/8" wide

PORTUGUESE WATER DOG (LION CLIP)

Body - Last rib forward 5/8" HT or scissor
 Last rib backward, legs, 3/4 of tail & face 10

PORTUGUESE WATER DOG (RETRIEVER CLIP)

Body 3 3/4 & 3 3/4 FC or 5/8" HT
 Face 4 & 4FC
 Head, tail Scissor

SCHNAUZER

Body, sides, back 7 & 7FC or 5 & 5FC
 Head, ears, cheeks 10

SCOTTISH TERRIER & SEALYHAM TERRIER

Body, back, forechest 4 or 5
 Ears, throat 10 or 15
 Top of head, cheeks 8 1/2 or 7
 Tail 3 3/4 or scissor

SHIH TZU

Body 4 & 4FC to 5/8" HT
 Head, tail, ears Scissor

SILKY TERRIER

Body 4 & 4FC to 5/8" HT
 Head, underbody, tail Scissor
 Ears 10

SOFT COATED WHEATEN TERRIER

Body, tail 3 3/4 & 3 3/4 FC or 5/8" HT
 Cheeks, throat 4 & 4FC or 5 & 5FC
 Head, ears Scissor

WELSH TERRIER

Body, back, sides, tail 5 or 7
 Head, ears, throat 10

WEST HIGHLAND WHITE TERRIER

Body, back, sides 5 to 3 3/4
 Head, underbody, tail Scissor
 Ears tips 10 or 15

YORKSHIRE TERRIER

Body 4 & 4FC to 5/8" HT
 Face, head Scissor
 Ears 10

"SC" Snap-on comb can be used over 30, 35 or 40 blades

"10" (ex. 10 or 15) - Select the blade according to how long you want to leave the coat

"7 &" (ex. 7 & 7FC) - Use the "skip to cut" (i.e. 7) blade before bathing and the "finish cut" (i.e. 7FC) blade after bathing to complete the cut

"to" (7 & 7FC to 5/8" HT) - Select the blade according to the size of the animal and the length you want to leave

Blade cutting lengths listed are against natural lie of the coat. Cutting with lie of the coat leaves hair one size longer (ex. #7 cut with lie of the coat = length of #5). All suggested body blades should be used with the lie of the coat.



Item #64160
 Trimmer
 Leaves hair 1/150" - 0.1mm
 Surgical Stainless-Steel



Item #64185
 Size 00000
 Leaves hair 1/125" - 0.2mm



Item #64076
 Size 40
 Leaves hair 1/100" - 0.25mm
 Item #64084
 Size 40 Surgical Stainless-Steel
 Leaves hair 1/100" - 0.25mm



Item #64935
 Size 35
 Leaves hair 1/75" - 0.35mm



Item #64075
 Size 30
 Leaves hair 1/50" - 0.5mm



Item #64072
 Size 15
 Leaves hair 3/64" - 1.2mm



Item #64071
 Size 10
 Leaves hair 1/16" - 1.5mm



Item #64120
 Size 9
 Leaves hair 5/64" - 2mm



Item #64170
 Size 8 1/2
 Leaves hair 7/64" - 2.8mm



Item #64080
 Size 7 Skip-Tooth
 Leaves hair 1/8" - 3.2mm

DO NOT use skip tooth blades on cats. Keep skin taut when clipping dogs and cats.



Item #64121
 Size 7 Finish Cut
 Leaves hair 1/8" - 3.2mm



Item #64079
 Size 5 Skip-Tooth
 Leaves hair 1/4" - 6.3mm



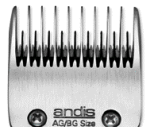
Item #64122
 Size 5 Finish Cut
 Leaves hair 1/4" - 6.3mm



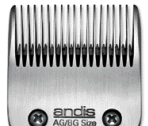
Item #64090
 Size 4 Skip-Tooth
 Leaves hair 3/8" - 9.5mm



Item #64123
 Size 4 Finish Cut
 Leaves hair 3/8" - 9.5mm



Item #64133
 Size 3 3/4 Skip-Tooth
 Leaves 1/2" - 13mm



Item #64135
 Size 3 3/4 Finish Cut
 Leaves hair 1/2" - 13mm



Item #64930
 Size 5/8" HT
 Leaves hair 5/8" - 16mm



Item #21641
 Size T84
 Leaves hair 1/32" - 0.8mm



Item #21641
 Size T84
 Leaves hair 3/32" - 2.4mm