

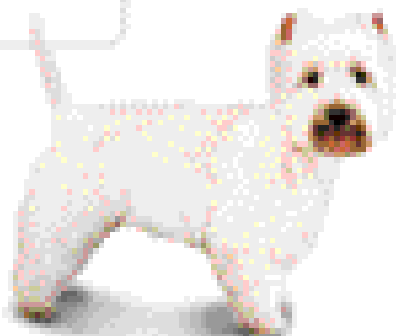
# andis

## TERRIER CHART



### SCOTTISH TERRIER

Top  $\frac{2}{3}$  back of ears, throat..... 10 or 15  
 Top of head, sides of face.....  $8\frac{1}{2}$  or 7  
 Back, shoulders, hips, forechest..... 4 or 5  
 Tail .....  $3\frac{3}{4}$



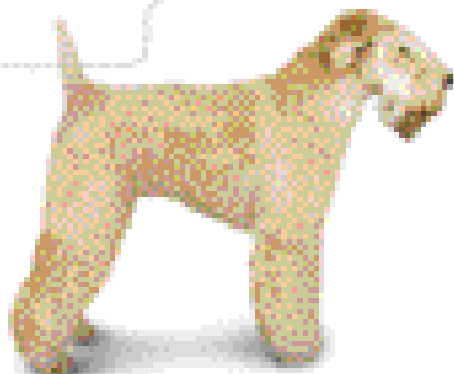
### WEST HIGHLAND WHITE TERRIER

Ear tips ..... 15  
 Back, shoulders, hips, forechest ..... 4 or 5  
 Tail .....  $3\frac{3}{4}$   
 Head, underline ..... Scissor



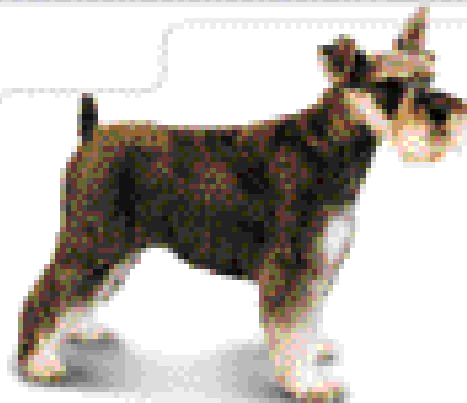
### AIREDALE & WELSH TERRIER

Ears..... 15 or 10  
 Head, sides of face, throat..... 7  
 Back, sides of body, tail..... 7 or 5  
 Legs, underline..... Scissor or SC



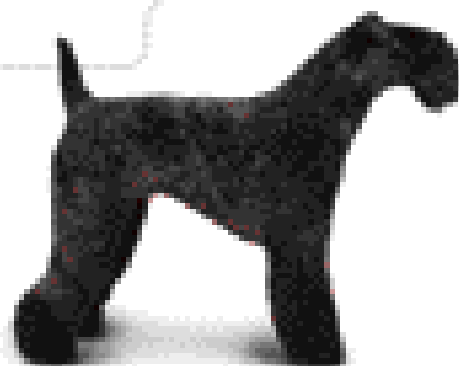
### SOFT COATED WHEATEN TERRIER

Ears from fold out..... 7  
 Sides of face, throat ..... 4 or 5  
 Shoulders, back, forechest, hips .....  $\frac{5}{8}$ " HT  
 Head, sides of body,  
 back of neck, legs, underline ..... Scissor or SC



### MINIATURE SCHNAUZER

Ears..... 10 or 15  
 Body, sides of face, head..... 7 or 5  
 Legs, underline ..... Scissor



### KERRY BLUE TERRIER

Ears, sides of face, throat..... 15 or 10  
 Top of head ..... 4 or 5  
 Shoulders, forechest .....  $3\frac{3}{4}$   
 Back, sides of body, tail .....  $\frac{5}{8}$ " HT or  $3\frac{3}{4}$  FC  
 Legs, underline..... Scissor or SC



### BEDLINGTON TERRIER

Cheeks to eye and outside corner  
 of mouth, under jaw, ears to tassel,  
 bottom  $\frac{2}{3}$  of tail..... 15 or 10  
 Shoulder and forechest ..... 7 & 7FC  
 Sides of body..... 4 or 5  
 Legs, muzzle,  
 topknot, feet, underline ..... Scissor or SC

### ALL STYLES

Sanitary prep..... 10  
 Pads ..... 15 or  $\frac{5}{8}$ " wide  
 Keep skin taut when clipping.

"SC" Snap-on comb can be used over 30, 35 or 40 blades

"o r" (ex. 10 or 15) - Select the blade according to how long you want to leave the coat

" &" (ex. 7 & 7FC) - Use the "skip to it l" (i.e. 7) blade before bathing and the "finish cut" (i.e. 7FC) blade after bathing to complete the cut

"to" (7 & 7FC to  $\frac{5}{8}$ " HT) - Select the blade according to the size of the animal and the length you want to leave

# andis

## ULTRAEDGE™

CARBURIZED STEEL EXTENDS EDGE LIFE - CHROME FINISH RESISTS RUST

Available separately, Andis ULTRAEDGE™ blades will fit on the Andis model AG, AG2, AGC, AGC2, AGR, MBG Clippers and Oster® A5 Clippers.



Item #64160  
Trimmer  
Leaves hair 1/150" - 0.1mm  
Surgical Stainless-Steel



Item #64185  
Size 00000  
Leaves hair 1/125" - 0.2mm



Item #64076  
Size 40  
Leaves hair 1/100" - 0.25mm  
Item #64084  
Size 40 Surgical Stainless-Steel  
Leaves hair 1/100" - 0.25mm



Item #64935  
Size 35  
Leaves hair 1/75" - 0.35mm



Item #64075  
Size 30  
Leaves hair 1/50" - 0.5mm



Item #64072  
Size 15  
Leaves hair 3/64" - 1.2mm



Item #64071  
Size 10  
Leaves hair 1/16" - 1.5mm



Item #64120  
Size 9  
Leaves hair 5/64" - 2mm



Item #64170  
Size 8 1/2  
Leaves hair 7/64" - 2.8mm



Item #64080  
Size 7 Skip-Tooth  
Leaves hair 1/8" - 3.2mm



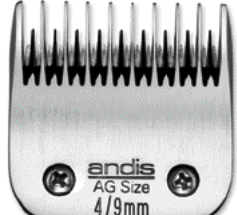
Item #64121  
Size 7 Finish Cut  
Leaves hair 1/8" - 3.2mm



Item #64079  
Size 5 Skip-Tooth  
Leaves hair 1/4" - 6.3mm



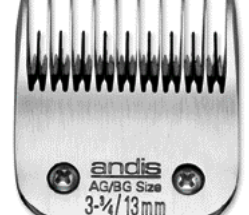
Item #64122  
Size 5 Finish Cut  
Leaves hair 1/4" - 6.3mm



Item #64090  
Size 4 Skip-Tooth  
Leaves hair 3/8" - 9.5mm



Item #64123  
Size 4 Finish Cut  
Leaves hair 3/8" - 9.5mm



Item #64133  
Size 3 3/4 Skip-Tooth  
Leaves hair 1/2" - 13mm



Item #64135  
Size 3 3/4 Finish Cut  
Leaves hair 1/2" - 13mm



Item #64930  
Size 5 1/8" HT  
Leaves hair 5/8" - 16mm



Item #64960  
Size 5/8" Wide- Toe Blade  
Leaves hair 1/32" - 0.8mm



Item #21641  
Size T84  
Leaves hair 3/32" - 2.4mm

"SC" Snap-on comb can be used over 30, 35 or 40 blades

"0" (ex. 10 or 15) - Select the blade according to how long you want to leave the coat

"&" (ex. 7 & 7FC) - Use the "skip to cut" (i.e. 7) blade before bathing and the "finish cut" (i.e. 7FC) blade after bathing to compare the cut

"to" (7 & 7FC to 5/8" HT) - Select the blade according to the size of the animal and the length you want to leave

DO NOT use skip tooth blades on cats. Keep skin taut when clipping dogs and cats.